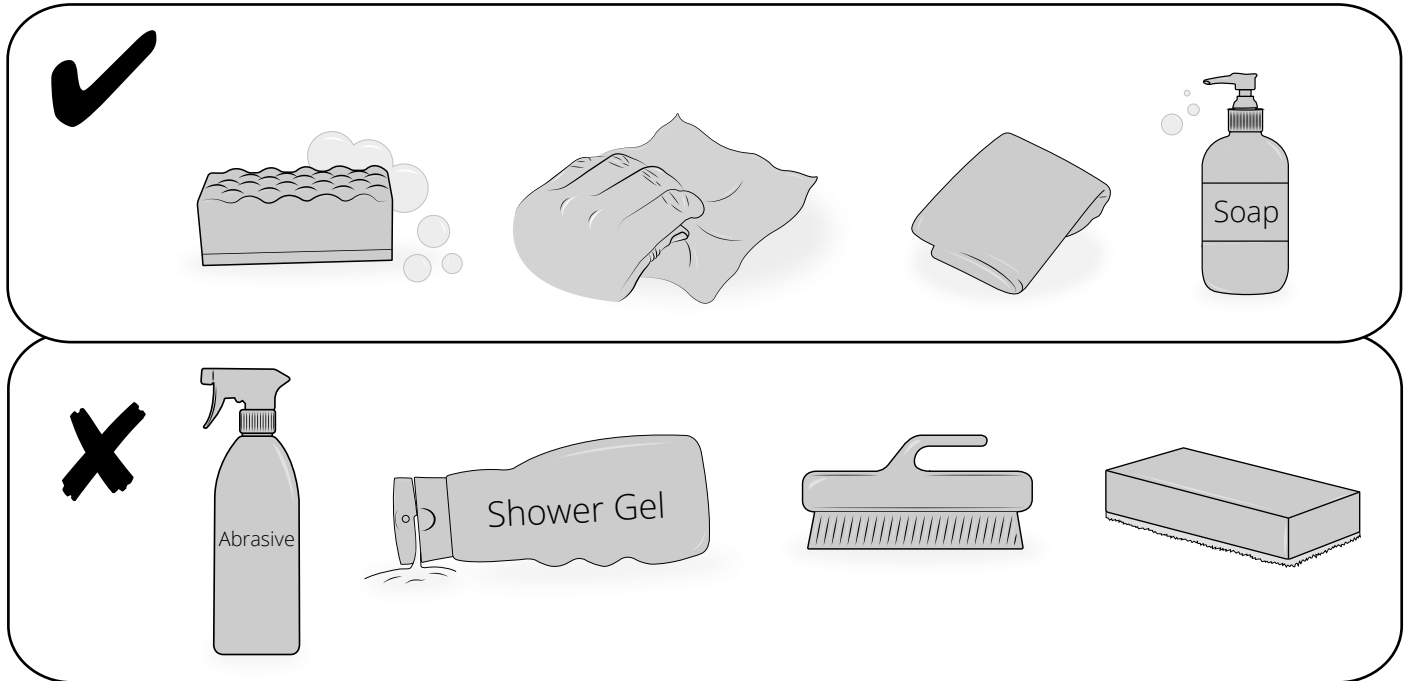


# Milano

Care and Cleaning:



## **Bath Cleaning Instructions**

*Our Baths are manufactured from 100% cast acrylic sheet. The colour of your acrylic product is not a surface finish or 'glaze' but is the same colour throughout the sheet. The bath should be cleaned immediately after use whilst the water is draining and is still warm. Should the bath be cold before draining any residue in the water can harden on the sides and base of the bath and will be harder to remove. Please use hot soapy water for cleaning and wipe the bath dry.*

*Due to the nature of acrylic and the way it is manufactured, surface scratches can be removed with a rubbing compound (such as car colour restorer) and fine wet & dry paper. Rubbing with a car colour restorer and a soft cloth will bring back the original shine. If any grime builds up on the surface of the acrylic it may be removed with car colour restorer and a soft cloth.*

*Acrylic is not flammable but will burn and melt if it comes into contact with naked flames or excessively hot objects (such as a burning cigarette end). Acrylic has good resistance to properties such as acids and alkalis but organic solvents, such as paint strippers, peroxide etc., can cause damage to the surface and should not be allowed to have contact with it. If by accident this happens dilute the hot soapy water and wash away, drying the surface.*